

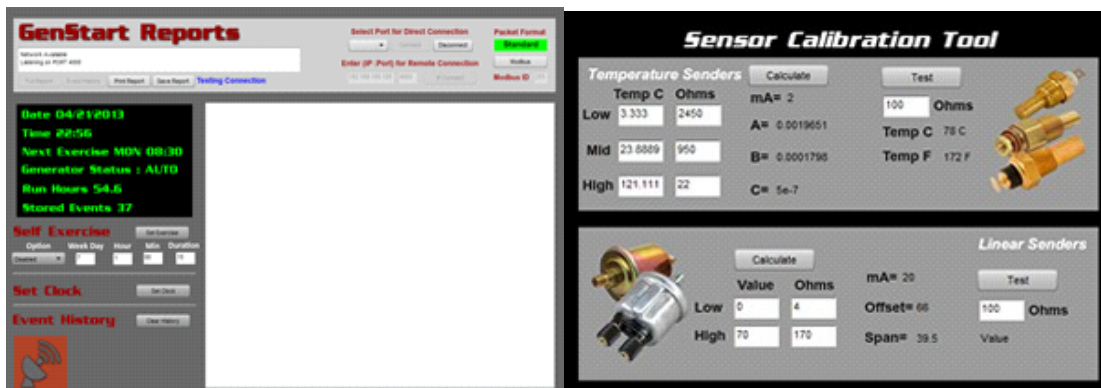
GenConnect Software Suite

The GenConnect software suite will provide you with all the tools you need to set up the GenStart controller. Each program has options to connect via direct connection (USB or Serial to RS485 Converter) or Network (Wi-fi/CDMA).



Profile Editor - Profiles define how the GenStart is configured by setting channel functions, sensor calibration, and trip points. With the Profile Editor you can create, save, download and upload profiles with a click of a button. Sample profiles are included with the GenStart controller, some are generator specific. Profiles for your application may or may not be available.

Remote Monitor - The remote monitor application allows you to quickly connect to the generator to confirm correct operation or verify reading. If notifications are in queue, the remote monitor application will retrieve and display any messages and clear them from the queue. With controls to remote start, remote stop, off mode (reset), and auto mode you can easily verify correct operation of the generator.



Reports - All your information in one place! Connect via GenStart Reports to download and view the event history, calibration data, date and time settings, exercise settings, and run hours. Options to save or print reports are also available.

GenStart Utilities - Utilities for calibrating sensors and dealer access. Use the dealer access application to change PIN numbers, reset run hours, or update firmware.