

# ENGINE COST SAVER

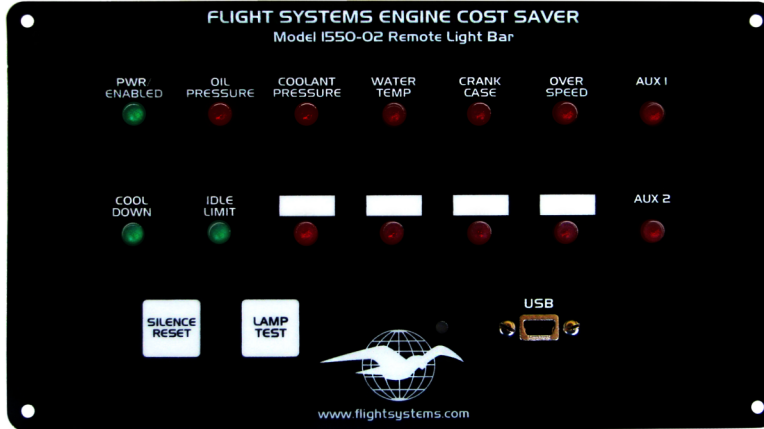
## Model I550-02

### Alarm Silence/Reset

Press to silence.  
Audible alarm will beep once for silenced and twice for normal mode.  
When alarm is in silence mode audible alarm will beep once per minute.

### Lamp Test

Press and hold to test hardware. Lights will illuminate in sequence, then fade to test the dimmer and flash to test audible alarm.



**14 light annunciator**  
Display brightness will auto adjust with ambient light.

### USB

Connect PC to USB port to download or upload settings from the Model 1550 via CAN bus

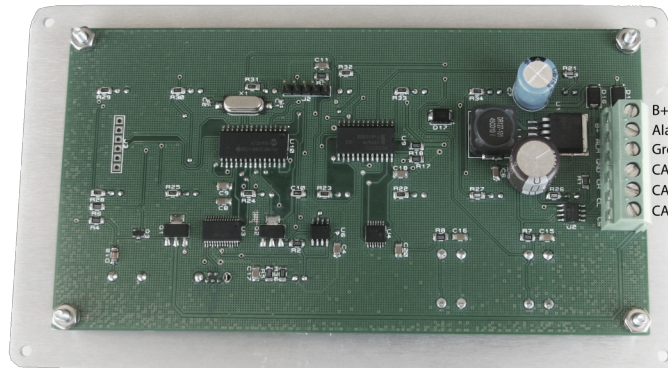
## Installation

Cut a square hole 6.25" by 3.25".

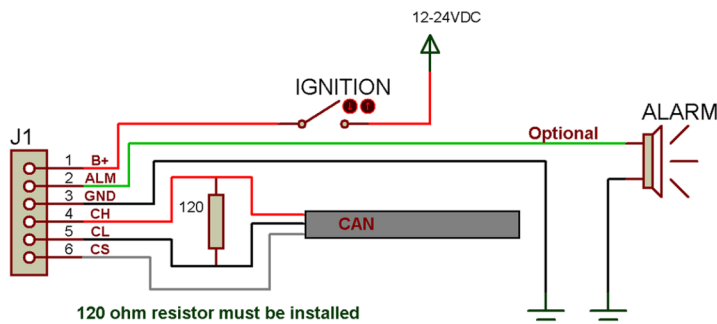
Place the remote light bar and mark the 4 mounting holes for drilling if necessary.

Remove the remote light bar and connect the wiring as shown with 18 gauge wire.

B+ to active ignition circuit (36 vdc max)  
ALM Optional alarm output (1 Amp Max)  
GND to system ground  
CH to red wire (CAN high)  
CL to black wire (CAN low)  
SH (CAN shield)



B+ (Ignition)  
Alarm Out (B+)  
Ground  
CAN High (Red)  
CAN Low (Black)  
CAN Shield



Optionally the 1550-02 can be powered by one of the Model 1550 digital outputs. Be sure to set the output used to "Ignition" using the Engine Cost Saver software.

Install the remote light bar and secure with 4 mounting screws. No further setup is necessary.

Connect the USB port to a PC with the Engine Cost Saver software installed to monitor, download or upload settings to the Model 1550.

## FLIGHT SYSTEMS INC

505 Fishing Creek Road Lewisberry, PA 17339 USA  
717-932-9900 Fax: 717-932-9925  
www.flightsystems.com