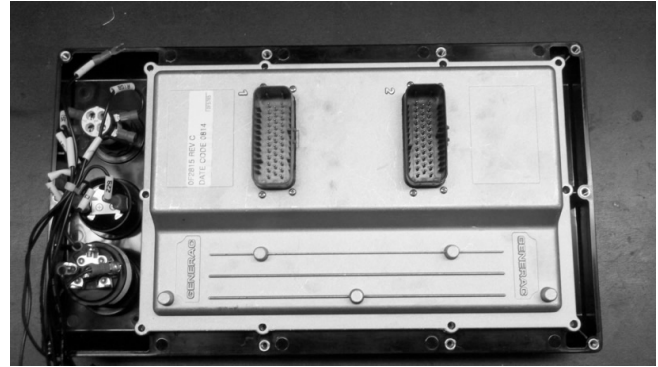
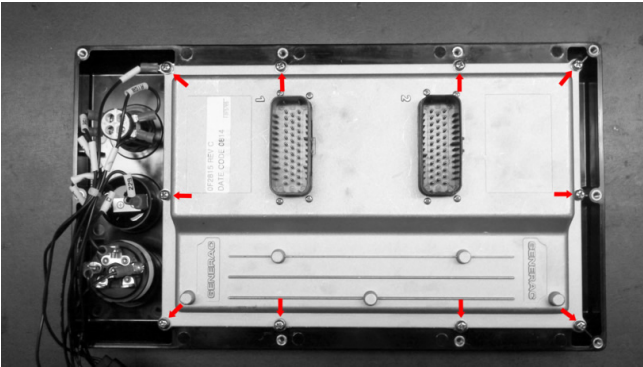
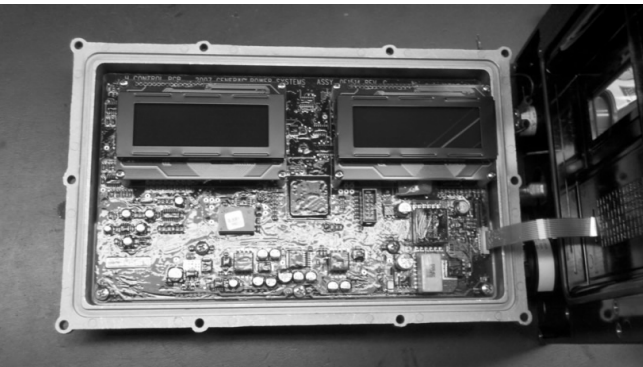


H-Panel Keypad Replacement

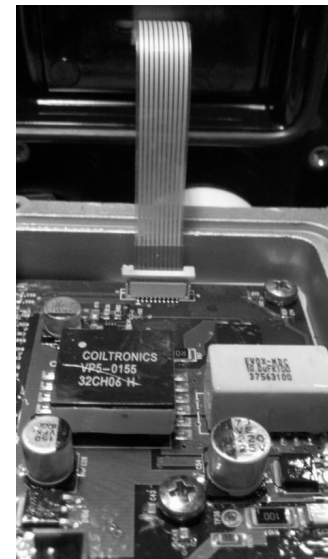
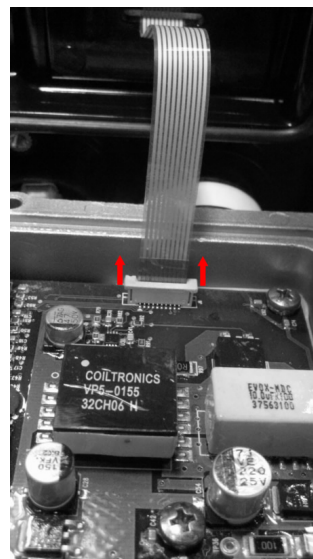
1. Remove the 10 screws attaching the aluminum housing to the plastic face plate.



2. Turn the unit over and lift the face plate off from left to right. Stand the face plate on the right edge next to the aluminum housing.

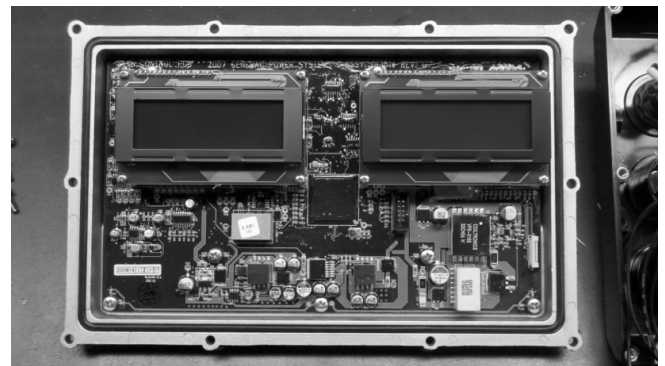


3. Gently lift up on the white connector lock to release the keypad ribbon. Remove the ribbon from the connector and separate the face from the aluminum housing.



4. If the gasket is still attached to the face, gently remove the gasket from the face.

Installing the gasket on the aluminum back will make assembly easier and prevent the gasket from getting pinched between the face and the controller assembly.



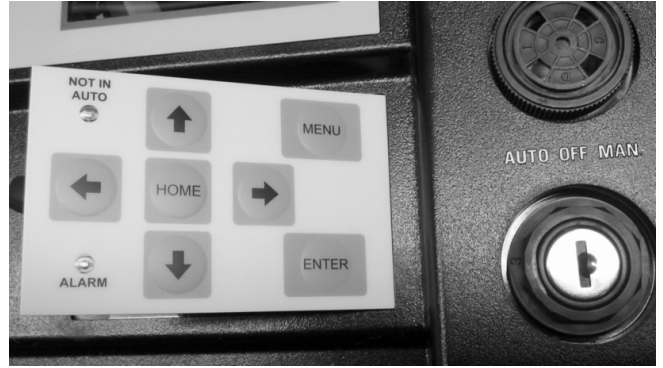
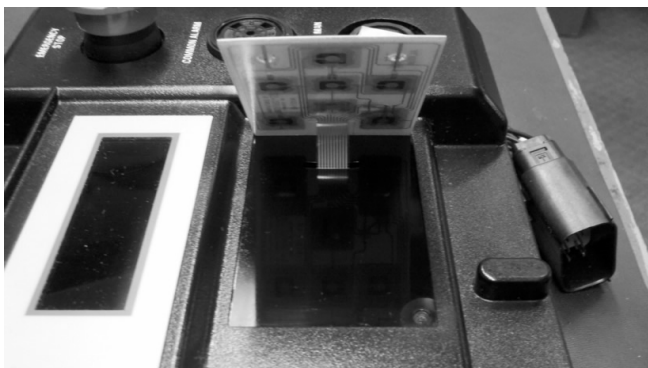
5. Remove the old keypad and use alcohol to clean up any adhesive left behind. Be sure the surface is clean and free of any oil or dirt.



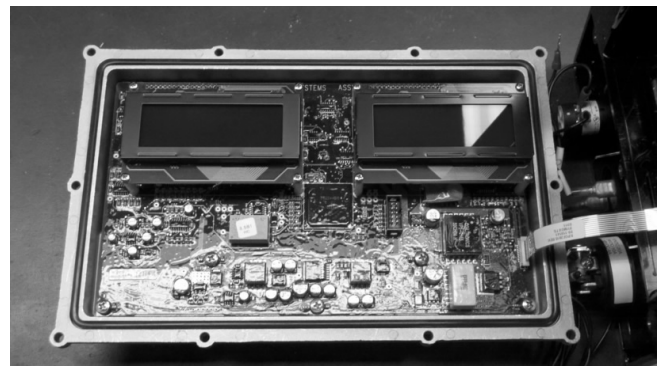
6. With the old keypad removed and the surface free of any adhesive, you are ready to install the replacement keypad. Remove the backing from the new keypad.



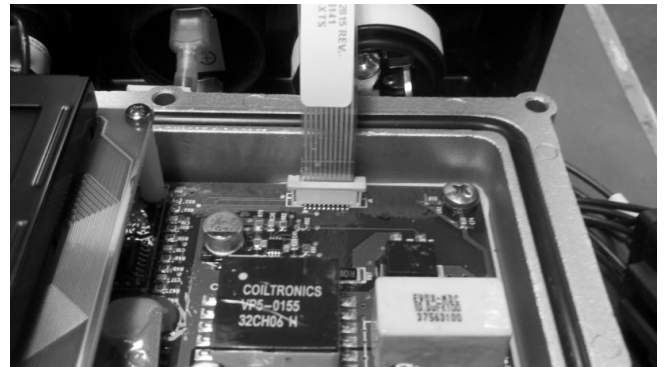
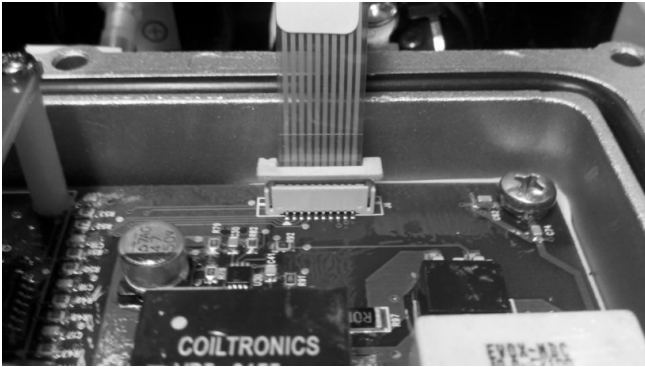
7. Insert the ribbon through the slot in the face plate. Place the keypad flush with the right edge of the recessed area and smooth out from right to left. Apply even pressure over the keypad to secure.



8. Place the face plate at the right side of the aluminum back, standing on edge. At this point you may want to clean the displays and the inside of the windows in the face plate. Use a soft, lint free cloth to remove dust and fingerprints. Do NOT use alcohol or other cleaners on the displays.



9. Insert the ribbon into the connector with the connector lock still lifted up. Be sure the ribbon is seated properly, then gently press down on the connector lock to secure the ribbon.



10. Now place the face plate over the aluminum housing. Be careful not to lift the face plate too far above the controller so the ribbon is not pulled from the connector. Line up the windows with the displays and be careful not to disturb the gasket on the aluminum housing. Hold the aluminum housing tight against the face plate and flip the control over.



11. Insert the 10 screws that attach the face plate to the aluminum housing and secure. Remember to connect the chassis ground to the screw in the top right corner.



For additional assistance and or questions contact Flight Systems technical support at
phone : 717-932-9900
email : hawk@flightsystems.com