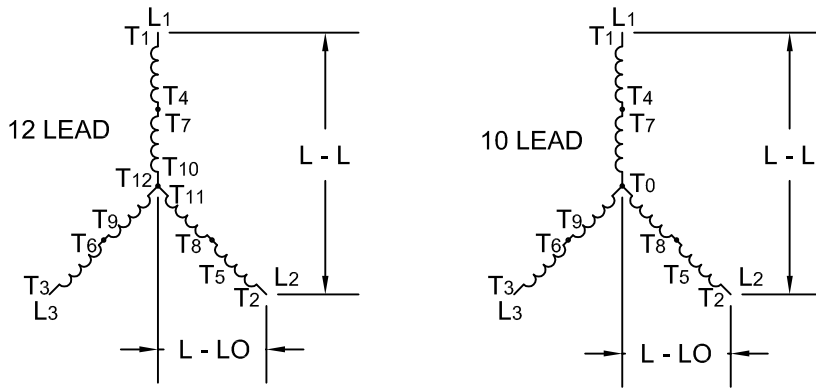
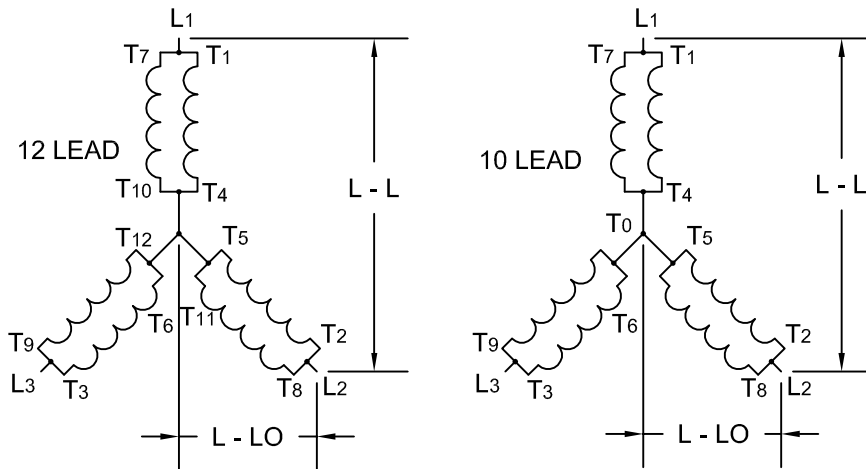


### SERIES HIGH WYE



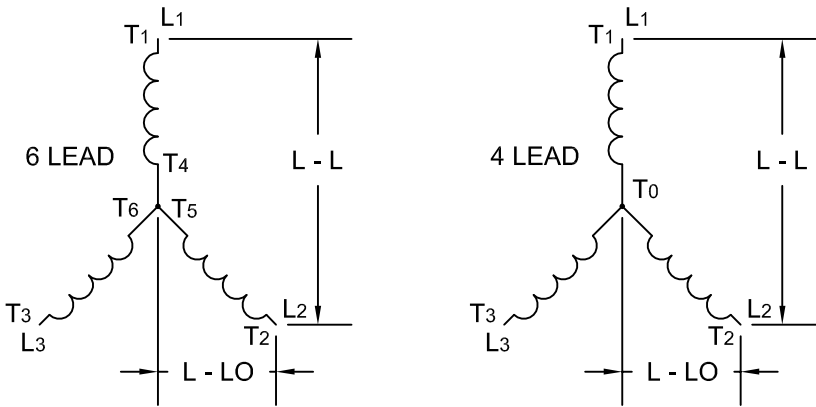
Hz	L - L	L - LO
60	380	219
	416	240
	440	254
	460	266
	480	277
50	380	219
	400	231
	415	240
	440	254

### PARALLEL LOW WYE



Hz	L - L	L - LO
60	190	110
	208	120
	220	127
	230	133
	240	139
50	190	110
	200	115
	208	120
	220	127

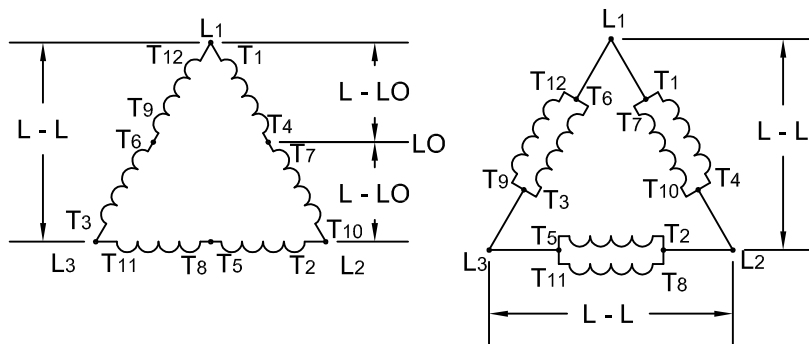
### WYE



Hz	L - L	L - LO
60	380	219
	480	277
	600	346
	2400	1386
	3300	1905
	4160	2402
	6600	3811
50	380	219
	400	231
	415	240
	3300	1905
	6600	3811
11000	6351	

### SERIES HIGH DELTA

Hz	L - L	L - LO
60	240	120
	277	139
50	200	100
	220	110
	240	120



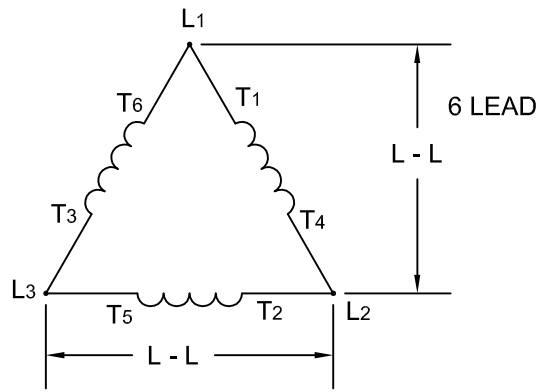
### PARALLEL LOW DELTA

Hz	L - L
60	110
	120
50	100
	110



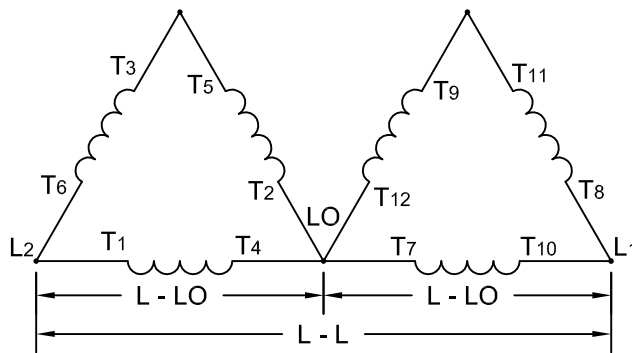
FLIGHT SYSTEMS INC.  
505 FISHING CREEK RD.  
LEWISBERRY, PA 17339  
www.flightsystems.com

## DELTA



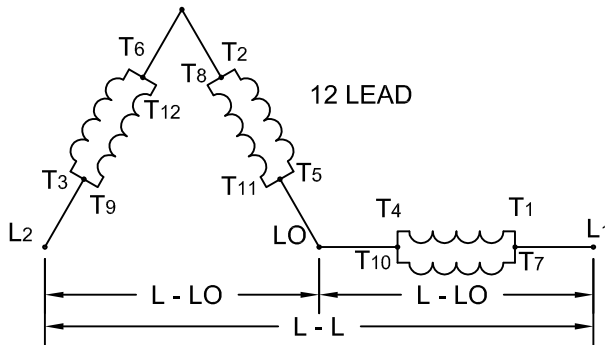
Hz	L - L	
60	480 2402 7967	
50	380 1905 6351	

## \*DOUBLE DELTA



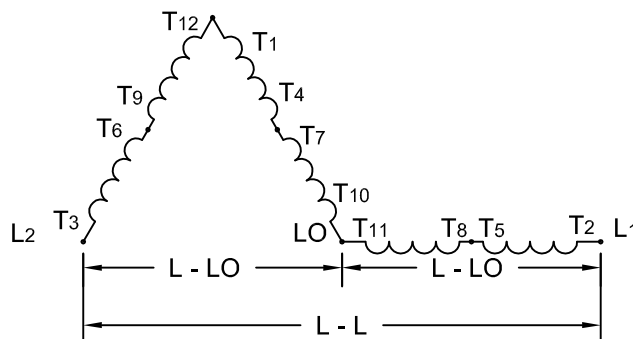
Hz	L - L	L - LO
60	200 220 240	100 110 120
50	220	110

## \*PARALLEL LOW ZIG ZAG



Hz	L - L	L - LO
60	200 220 240	100 110 120
50	220	110

## \*SERIES HIGH ZIG ZAG



Hz	L - L	L - LO
60	480	240

