

**PRODUCT  
INSTALLATION  
PHOTO  
GALLERY**



**FLIGHT SYSTEMS**

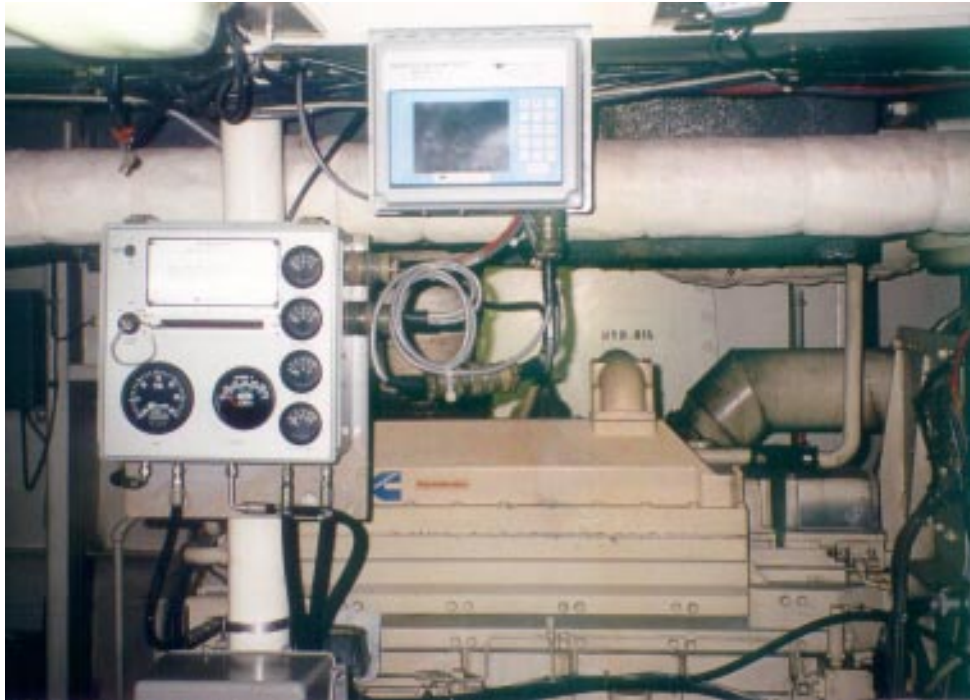
***M***

***A R I N E***

---

**DIESEL CONTROLS**

**VESSEL: BELLE WATLING, COASTAL TOWBOAT  
JACKSONVILLE, FL. DATE: AUG. 2002**



Details: (Top) Flight Systems' Model 565 Engine Saver®/Gauge Package and Model 575 Service Advantage Data Logger with Real-Time Display Monitor mounted in the engine room protect the *Belle Watling's* Cummins KTTA19's. (Below) Service Advantage Monitors in the wheelhouse display real-time engine parameters provided by the Engine Saver®.

**VESSEL:** MELANIE, INLAND TOWBOAT, DIXIE TOWING, INC.  
JACKSONVILLE, FL. **DATE:** JUNE, 2003



Details: Flight Systems' Model 565 Engine Saver®/Gauge Package units mounted in the engine room protect the *Melanie's* Detroit Diesel 8V-92 main engines.

**VESSEL:** MELANIE, INLAND TOWBOAT, DIXIE TOWING, INC.  
JACKSONVILLE, FL. **DATE:** JUNE, 2003



Details: Twin LCD Touch Screen Displays for Flight Systems Model 575 Service Advantage Data Logger and “Light Bar” Annunciators for the 565 Engine Saver®/ Gauge Packages are shown on the *Melanie’s* bridge.

**VESSEL: LADY JILL, INLAND PUSHBOAT, KIRBY INLAND MARINE CHANNEL VIEW, TX DATE: SEPT, 2003**



Details: Flight Systems' Model 550 Engine Saver® installed to provide protection for the *Lady Jill's* port Volvo 400hp Diesel.

**VESSEL:** *LADY JILL*, INLAND PUSHBOAT, KIRBY INLAND MARINE  
CHANNEL VIEW, TX **DATE:** SEPT, 2003



Details: Flight Systems' Model 550 Engine Saver<sup>®</sup> installed to provide protection for the *Lady Jill's* starboard Volvo 400hp Diesel.