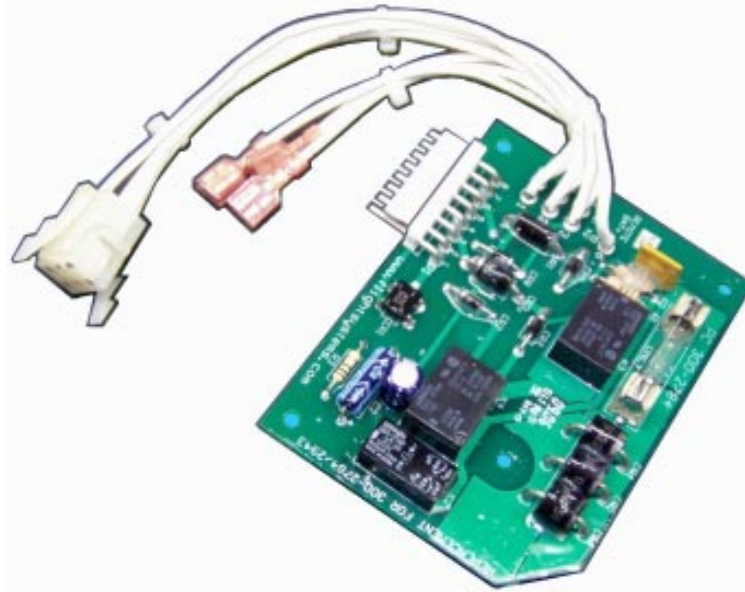


PRODUCT INFORMATION

Replacement for Onan® P/N 300-2784, 300-2943 RV Gen Set Control Board (FS P/N 56-2784-2943)



LIST OF FEATURES:

- Control circuitry same as the improved style used on later 300-3056 and 300-3763 boards.
- Heavy-duty relays are rated at 8 amps.
- Fully insulated quick-connect terminals for the start/stop switch.
- Unreliable “piggyback” style connections have been eliminated.
- Heavy-duty resettable fuse rated at 2.5 amps.
- Added ignition circuit voltage suppression.
- Heavy conformal coating provides superior corrosion and vibration protection.
- One board replaces the 300-2784 and the 300-2943 part numbers.
- Beefed-up battery charging circuit uses 3 heavy-duty diodes with built-in heat sink.
- 2-Year Warranty. Board is fully rebuildable. *(See reverse for Warranty & other details)*



FLIGHT SYSTEMS

505 Fishing Creek Road • Lewisberry, PA 17339

www.flightsystems.com

Technical Support:

717-932-9900 (8:00-4 ET, M-F)

Fax: 717-932-9925

E-Mail: GCtechnical@flightsystems.com

WARRANTY POLICY

Replacement Onan® Controls Manufactured by FLIGHT SYSTEMS

Note: Always Refer to the Specific Generator Set Manual when Troubleshooting Problems.

This Flight Systems manufactured replacement generator control is warranted to be free from defects in materials and workmanship for a period of two years from the date it was sold. *(This date appears on unit label)*

Flight Systems' Limited Warranty covers the repair or replacement of defective product within the warranty period. It does not cover the cost of installation, or removal costs incurred, or possible damage to other equipment (including the generator or parts thereof) as a result of this product.

Flight Systems (or its authorized agent) shall reserve the right to determine the cause of malfunction. *In the case if we determine that it was due to abuse, misuse, improper installation, acts of nature, failure to perform recommended gen set maintenance procedure or problems elsewhere in the gen set, the warranty claim shall be disallowed and established repair rates shall apply. Ship defective units directly to:*

Flight Systems, 505 Fishing Creek Road, Lewisberry, PA 17339 - Attention: Warranty Repair

Please prepay all freight charges and note the nature of the failure, if known.

REBUILDING SERVICE

If this product suffers a failure when out of warranty, it can be rebuilt. As with all Generator Controls Rebuilt by Flight Systems, a One-Year Warranty will be issued. Please contact us for current rebuild pricing. *Ship units to:*

Flight Systems, 505 Fishing Creek Road, Lewisberry, PA 17339 - Attention Repair Dept.

Please prepay all freight charges and note the nature of the failure, if known.

TECHNICAL SUPPORT

Technical support is available by phone, fax or e-mail for all Flight Systems products.

Phone: 717-932-9900 (8:00am - 4:00pm ET, M-F)

Fax: 717-932-9925 E-Mail: GCtechnical@flightsystems.com

OTHER PRODUCTS & SERVICES

We offer improved replacements for the following Onan® Controls

OEM Part #	Description
ONAN® 300-C859	GEN SET CONTROL
ONAN® 300-0679, 0680	ENGINE CONT. MNTR.
ONAN® 300-0681, 0682	ENGINE CONT. MNTR.
ONAN® 300-B1073, B944	RV GEN SET CONTROL
ONAN® 300-1006, 1404, 1540	YD REGULATOR
ONAN® 300-2604	ENGINE MONITOR (12V)
ONAN® 300-2784, 2943	RV GEN SET CONTROL
ONAN® 300-3056, 3687	RV GEN SET CONTROL
ONAN® 300-3763, 3764	RV GEN SET CONTROL
ONAN® 305-0826, 0809-01, 0851	RV VOLTAGE REGULATOR
ONAN® 332-1268	VR21 REGULATOR
ONAN® 332-1956	VR21 REGULATOR

Controls Rebuilding Service

Flight Systems rebuilds over 200 different Onan®, Kohler®, Generac®, Basler®, ASCO® and other Generator & ATS Controls. Rebuilt-Exchange Service is available on all Part Numbers we have cores for. Please call or see our website for a complete list.

Order Desk: 800-403-3728

(8-5:30 ET, M-F)

www.flightsystems.com

Other Generator Controls, Test and Monitoring Equipment:

See our website or call about our Model 540 Standby Controller, Model 325 Generator Exercise Monitor, Model 360 "G-Man" RV Gen Set Service Tool or our line of Diesel Controls, featuring the famous Engine Saver®.